

Perfectha® aesthetics by Sinclair

Founded in 1971, Sinclair is a global organisation that delivers a unique range of scientifically-advanced, high-margin aesthetic products and services made exclusively for a worldwide industry of highly-skilled clinicians; ensuring our community has real, long-lasting, exceptional results – every time.



UKBR-00652356-001-000

 PERFECTHA®

 SINCLAIR

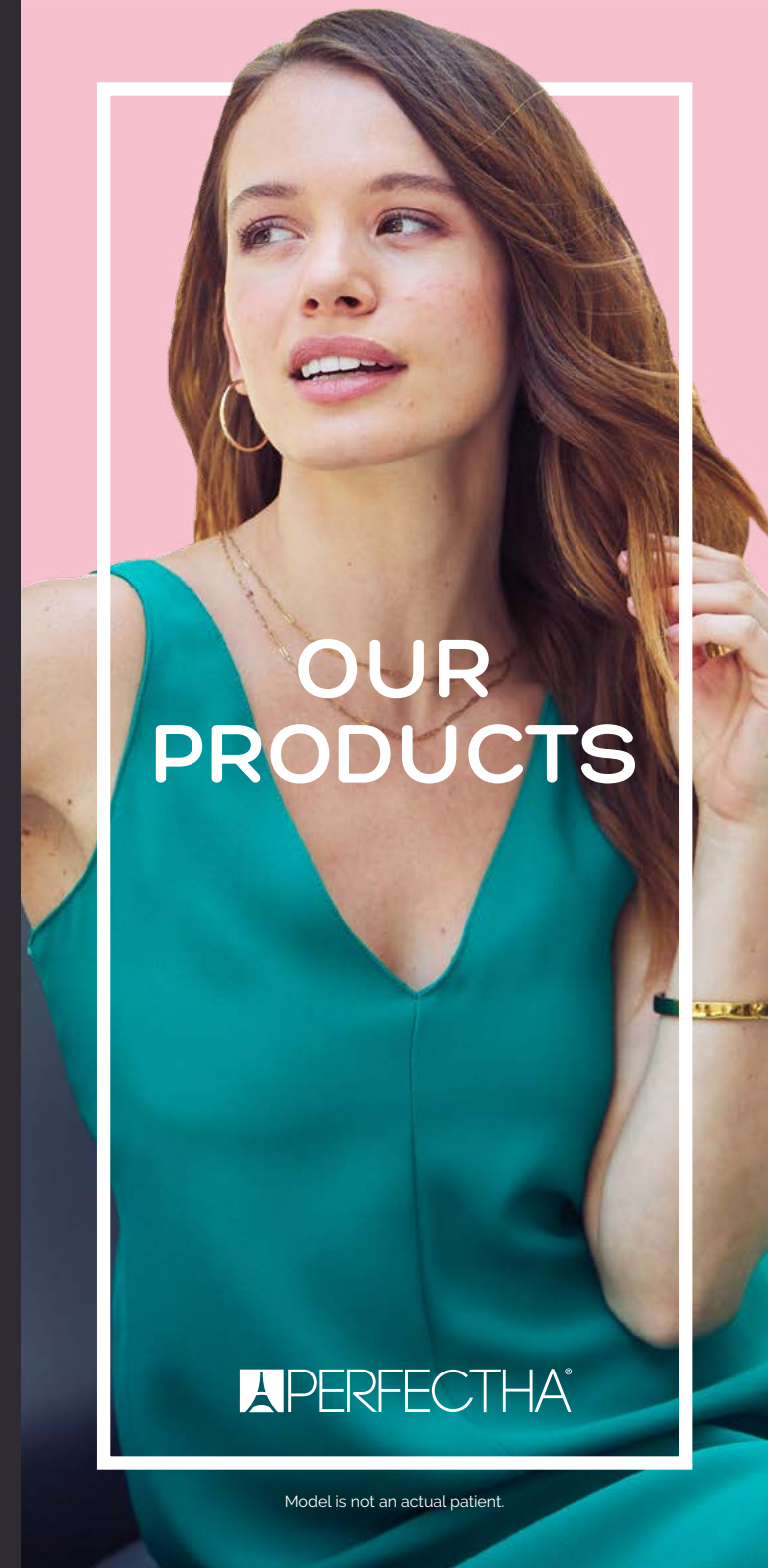
1st Floor Whitfield Court, 30-32 Whitfield Street,
London, W1T 2RQ, United Kingdom.

E. perfectha@sinclairpharma.com
www.perfectha.com

 **CE 2195**

Manufactured by Sinclair France SAS
8ch Jubin - 69570 Dardilly - France

  Follow Us



OUR PRODUCTS

 PERFECTHA®

Model is not an actual patient.

The freedom your patients demand

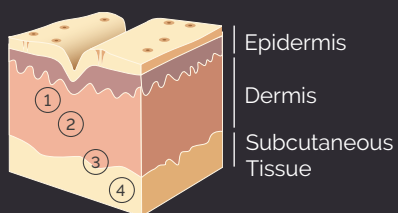
Manufactured in France, Perfectha is a range of tailor-made Hyaluronic Acid (HA) fillers for wrinkle correction, facial contour and volume restoration.

Sold in over 50 countries worldwide¹, Perfectha is available in four variants — with and without Lidocaine — each exclusively formulated to treat specific areas of the face, offering patients not only long-lasting but also natural-looking results.

Four variants, eight SKUs. Limitless possibilities.

1. Data refers to the original Perfectha. Data on file (2021).

APPLICATION AREAS



PERFECTHA FINELINES

with or without Lidocaine

- One 1.0ml syringe
- Two 30g x 13mm needles
- For intradermal injection
- 180,000 particles/ml
- 20 mg/ml of Hyaluronic Acid
- Application: area 1
- With Lidocaine = 0.3% (w/w) of Lidocaine hydrochloride

Use it for:

- Superficial facial lines such as: periorbital lines and peribuccal fine lines
- Tear troughs by injection into the supraperiosteal plane



PERFECTHA DEEP

with or without Lidocaine

- One 1.0ml syringe
- Two 27g x 13mm needles
- For subcutaneous injection
- 8,000 particles/ml
- 20 mg/ml of Hyaluronic Acid
- Application: area 4
- With Lidocaine = 0.3% (w/w) of Lidocaine hydrochloride

Use it for:

- Deep lines and depressions such as: nasolabial folds and marionette lines
- Lip augmentation
- Moderate contouring
- Volumisation in areas such as: cheekbones, chin, jawline, temples, nose and sub-orbicularis oculi fat (SOOF)



PERFECTHA DERM

with or without Lidocaine

- One 1.0ml syringe
- Two 30g x 13mm needles
- For superficial subcutaneous injection
- 90,000 particles/ml
- 20 mg/ml of Hyaluronic Acid
- Application: area 3
- With Lidocaine = 0.3% (w/w) of Lidocaine hydrochloride.

Use it for:

- Medium facial lines and depressions such as: nasolabial folds and marionette lines
- Lips enhancement and scars



PERFECTHA SUBSKIN

with or without Lidocaine

- One 1.0ml syringe (three blisters)
- Six 25g x 13mm needles
- For deep subcutaneous to supraperiosteal injection
- 2,000 particles/ml
- 20 mg/ml of Hyaluronic Acid
- Application: area 4
- With Lidocaine = 0.3% (w/w) of Lidocaine hydrochloride

Use it for:

- Creation of volume and facial contours in areas such as: cheekbones, chin, jawline, temples, forehead, bridge of the nose and hands